



networks@work

Quick Install Guide

24-Port 10/100/1000Mbps
Web-Managed Gigabit
Ethernet Switch

GSC2024WM 1a
GSC2024WM 6a (RoHS compliant)



Table of Contents

1: Introduction	1
Packaging Content.....	2
2: Let's Get Going-Hardware Setup	3
Desktop installation	3
Rack installation.....	4
3: Utility Installation.....	6
4: Accessing to web-based interface	10
5: Troubleshooting.....	12
6: Panel Views and Descriptions.....	13
7: Technical Specifications	16
8: TCP/IP Configuration.....	18
For Windows 95/98/98SE/ME/NT	18
For Windows XP/2000.....	21
Warranty Registration Card	25

1: Introduction

The Compex GSC2024WM is a 24-port 10/100/1000Mbps Web-managed Gigabit Ethernet Switch designed for high performance solution for enterprises. It allows legacy LANs to be upgraded to Gigabit LAN, without wasting company's existing investment in hardware, software, and trained personnel.



The Compex GSC2024WM supports Port-based VLAN for improving network performance and increasing security. Other advanced features include Port Mirroring, QOS and Trunking which can be easily configured using its user-friendly management interface.

The Compex GSC2024WM is a high density and high performance managed switch that caters to all your enterprise needs.

Packaging Content

Actual product appearance may slightly differ depending on the hardware version.



1 x Compex GSC2024WM unit



1 x Power cord



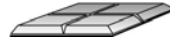
2 x Bracket



8 x Screws



1 x Product CD



4 x rubber feet

2: Let's Get Going-Hardware Setup

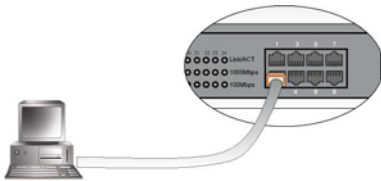
Complex GSC2024WM can be installed as a desktop unit or mounted on a 19-inch rack. Detailed installation process will be listed as shown below.

Desktop installation



Step 1

Attach the rubber feet on the bottom of the metal chassis. These rubber feet prevent the switch from shock and vibration.



Step 2

Use a RJ45 Ethernet cable and connect it to any of the ports.



Step 3

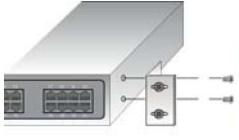
Insert the power cord into the socket at the back of Complex GSC2024WM and connect the other end to the power point.



Step 4

Check that the **POWER** LED at the front panel of Complex GSC2024WM has lighted up. The unit is now ready for use.

Rack installation



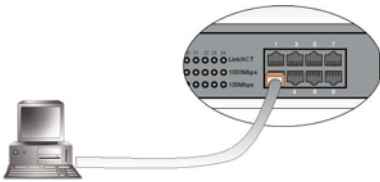
Step 1

Secure the brackets to the holes located at both sides of Compex GSC2024WM. Fasten it with the screws provided in the packaging.



Step 2

Align the brackets holes with the rack holes. Fasten both brackets to the rack using the screws provided.



Step 3

Insert one end of an RJ45 network cable into any of the ports on Compex GSC2024WM and the other end of your cable to the network adapter of your PC.



Step 4

Insert the power cord into the socket at the back of Compex GSC2024WM and connect the other end to the power point.



Step 5

Check that the **POWER** LED at the front panel of Compex GSC2024WM has lighted up. The unit is now ready for use.



The surface to place the Compex GSC2024WM should be clean, smooth, level and sturdy. Ensure there is enough spacing around the unit to allow attachment of network cables.

Please allow at least 4 inches of clearance in front and behind the switch for proper ventilation. This is especially important for an enclosed rack installation.

3: Utility Installation

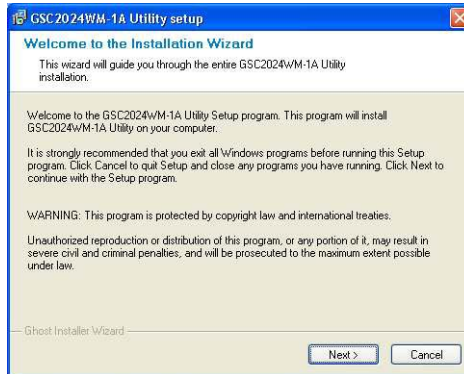
This utility is specially designed for easy configuration of Compex GSC2024WM. It allows you to upgrade your firmware, change your administrative password, configure your switch and also access to the web-based interface.

Step 1

Insert the Product CD into your CD-ROM drive.

Step 2

Click on the **Utility** section and the following screen will appear:

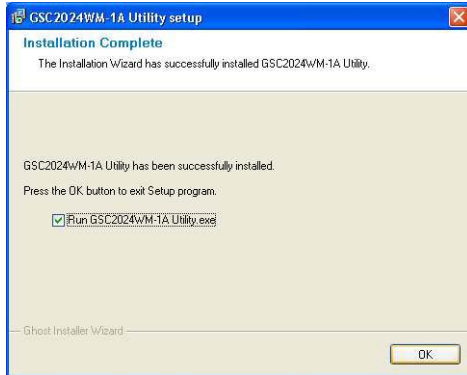


Step 3

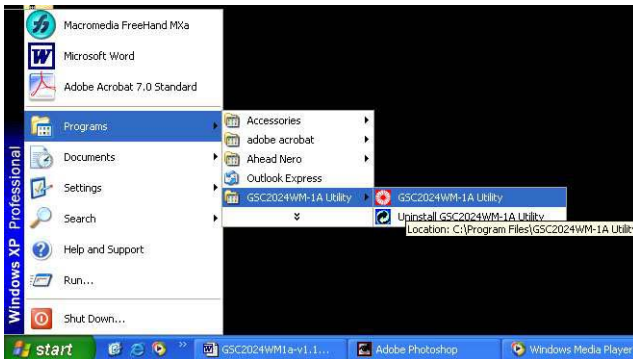
Follow the instructions stated on the screen.

Step 4

Once the installation is complete, the following screen will appear. Click on **Run GSC2024WM Utility.exe** and click on the **OK** button to run the utility program.



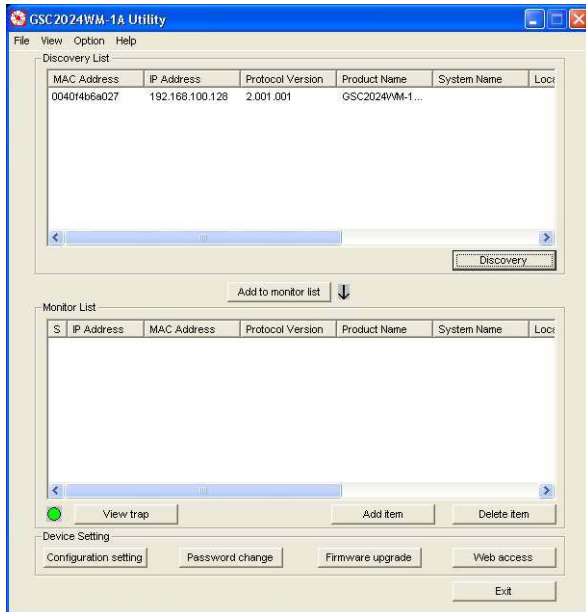
Alternatively, you may also go to **Start, Programs, GSC2024WM-1A Utility** and select **GSC2024WM-1A Utility** to activate the program.



Step 5

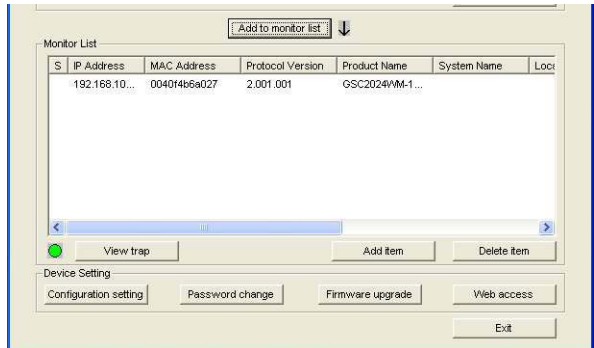
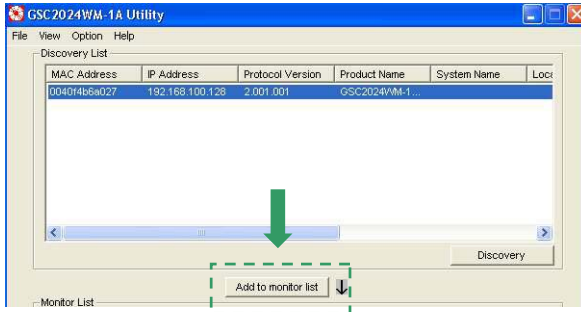
The following screen will appear. Ensure that your switch is correctly connected to your PC.

Click on the **Discovery** button and allow your system to detect the device that is connected to your PC. Once detected, the device information will be listed in the **Discovery List** section.



Step 6

Select the entry for the device and click on the **Add to monitor list** button to start monitoring the device.



From here, you can start to configure your Compex GSC2024WM either through this utility or from the web-based interface of the switch.

For details on using this utility, kindly refer to the User's Manual in the Product CD.

4: Accessing to web-based interface

You can access to the web-based interface via the utility program. Simply click on the **Web access** button and the Internet browser will lead you to the authentication page of your Compex GSC2024WM.

Alternatively, you can also access to the Internet browser manually by directly entering the URL Address, `http://192.168.100.128` in the address bar of your Internet browser.

Enter the default password as *password* and click on **Login**. Please note that the password is case-sensitive.

To change your password, you can either access to the web-interface or use the utility provided. Kindly refer to the user's manual for detail on how to change and login password using the web-based interface.

After logging in, the main page of Compex GSC2024WM will appear as shown:

GSC2024WM-1A 24 Port Gigabit Switch Manager

Switch Status Refresh

Product Name	GSC2024WM-1A 24 Port Gigabit Switch Manager
Firmware Version	2.00.00
Protocol Version	2.001.001
IP Address	192.168.100.128
Subnet mask	255.255.255.0
Default gateway	192.168.100.254
Trap IP	0.0.0.0
MAC address	00-40-F4-B6-A0-27
System Name	
Location Name	
Login Timeout (minutes)	5
System Up Time	0 days 1 hours 33 mins 55 seconds

PORT Status

10/100/1000 Mbps									
ID	Speed	Flow Control	Qos	Link Status	ID	Speed	Flow Control	Qos	Link Status
01	Auto	Enable	Normal	Down	13	Auto	Enable	Normal	Down

A brief description of the individual functions of Compex GSC2024WM are listed below:

Switch Status

Lists out the information such as flow control, speed, priority, and also displays information on connectivity, port trunking, port mirroring and VLAN.

Port Statistics

Lists out detailed statistics for all the ports, such as the total number of packets received/transmitted, the number of packets received/transmitted in different sizes, and also the number of errors found while receiving/transmitting the packets.

Port Configuration

Configures the flow control, priority and speed of individual ports.

Trunk Configuration

Extends the bandwidth of cascaded switches up to a maximum of 2.4Gbps in full duplex mode.

Kindly note that ports 1 to 4 have trunking capability and that only 3 trunking groups are allowed per Compex GSC2024WM switch.

VLAN Configuration

Groups individual ports into small virtual networks. You can configure up to 24 VLAN groups.

Mirror Configuration

Duplicates a port's traffic on to another port without interfering with the original port.

Misc Configuration

Allows you to change your Compex GSC2024WM's IP address, password, idle timeout; to make a backup copy of your configuration and to reset the settings to their factory default values.

Support

Make enquiries if you encounter problems while setting up the device.

Logout

Exit out of web-based interface environment.

5: Troubleshooting

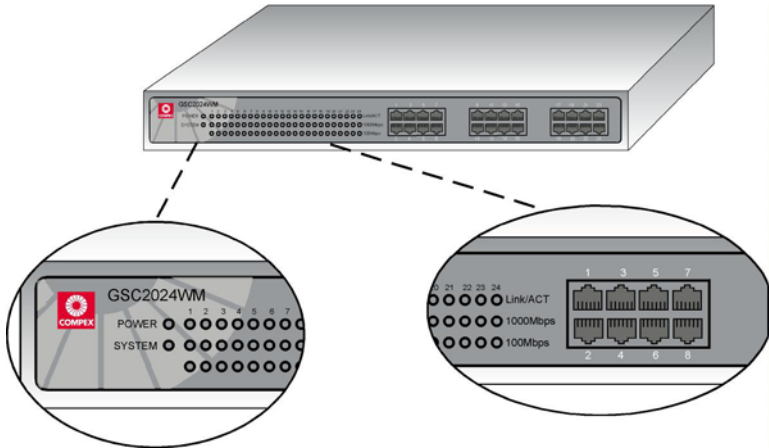
Compex GSC2024WM 24-Port 10/100/1000Mbps Web-Managed Gigabit Ethernet Switch is designed with LED indicators to indicate the operating status such as: Power ON/OFF, Port Activity Status (Transmit/and Receive), Duplex status and 10/100/1000Mbps connection status.

The LEDs may help to identify the source of the problem during troubleshooting.

LED indicators	Description of Function
POWER LED SYSTEM LED	<p><u>POWER/SYSTEM LED (Green)</u></p> <p>If the Power LED does not light up, check that:</p> <ul style="list-style-type: none"> ◆ Plug/cord is properly inserted into the socket. ◆ Main switch on the power point is ON.
Link/ACT LEDs	<p><u>LINK/ACT LEDs (Green)</u></p> <p>STEADY Green light indicates a good link is established.</p> <p>If the Link/ACT LEDs do not light up, check that:</p> <ul style="list-style-type: none"> ◆ RJ-45 cable is fully inserted (You hear a click sound if the cable is well inserted into the port.) ◆ The PC is powered up with the correct TCP/IP Configuration.

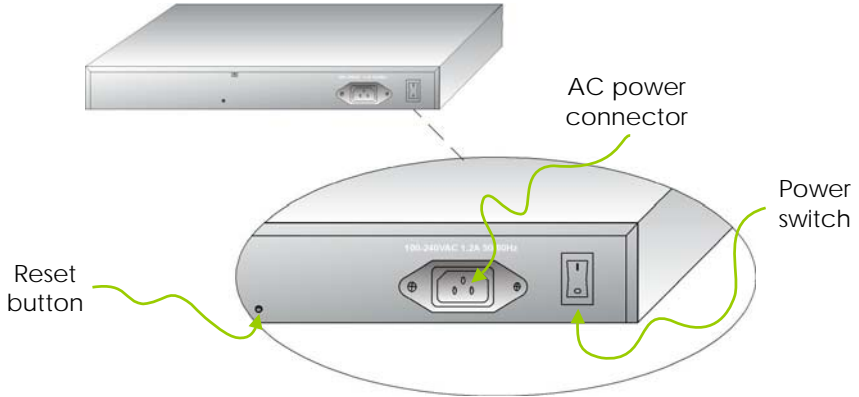
Please contact our technical support group if you experience further difficulties.

6: Panel Views and Descriptions



Features	Status and Indication	
POWER LED	Steady Green	Power is supplied to the device.
	Off	No power is supplied to the device.
SYSTEM LED	Steady Green	The device is ready to operate.
	Off	The device is either not powered up or a problem has occurred.
Link/ACT LED	Steady Green	The respective port has successfully connected to Compex GSC2024WM.
	Blinking	The respective port is transmitting or receiving data.
	Off	No connection is established.

Features	Status and Indication	
1000Mbps LED	Steady Green	The respective port is connected at the speed of 1000Mbps.
	Off	<ul style="list-style-type: none"> ◆ No network connection is established ◆ The respective port is connected at the speed of 10Mbps or 100Mbps. <p>When both 100Mbps and 1000Mbps LEDs do not light up, this means that the switch is operating at the speed of 10Mbps.</p>
100Mbps LED	Steady Green	The respective port is connected at the speed of 100Mbps.
	Off	<ul style="list-style-type: none"> ◆ No network connection is established ◆ The respective port is connected at the speed of 10Mbps or 100Mbps. <p>When both 100Mbps and 1000Mbps LEDs do not light up, this means that the switch is operating at the speed of 10Mbps.</p>



Features	Status and Indication
24 RJ45 ports	Each port supports <ul style="list-style-type: none"> ◆ Auto negotiable 10/100/1000Mbps ◆ Auto MDI/MDIX crossover detection.
Reset button	Reset all settings to factory default. Once you have pressed the reset button, Compex GSC2024WM will set all configurations back to their default values. Note: Your current configuration will NOT be saved.
AC power connector	Supports input voltage range from 100 to 240 VAC at 50-60Hz.
Power switch	Activate or deactivate power supplied to Compex GSC2024WM.

7: Technical Specifications

Network Protocol, Standards and Electrical Emissions	
Industry Standards	Complies with <ul style="list-style-type: none"> ◆ IEEE 802.3 10Base-T ◆ IEEE 802.3u 100Base-TX ◆ IEEE 802.3ab 1000Base-T ◆ IEEE 802.3x Flow Control
Safety Certifications	<ul style="list-style-type: none"> ◆ CE Mark ◆ FCC Class A ◆ Gost ◆ UL
Network Protocol	CSMA/CD
Interface Options	
24 RJ45 Ports	24 x 10/100/1000Mbps Auto MDIX RJ45 ports
Network Cables	<ul style="list-style-type: none"> ◆ 10 Base-T: 2-pair UTP Cat 3,4,5; up to 100m ◆ 100 Base-TX: 2-pair UTP Cat 5; up to 100m ◆ 1000 Base-T: 4-pair UTP Cat 5; up to 100m
Network Management	
In Band and Out of Band	<ul style="list-style-type: none"> ◆ Web-based HTTP ◆ Port Mirroring

Performance	
Transmission Method	Store and Forward
Data Transfer Rate	<ul style="list-style-type: none"> ◆ 10 Base-T Ethernet: 10Mbps (Half Duplex); 20Mbps (Full Duplex) ◆ 100Base-TX Fast Ethernet: 100Mbps (Half Duplex); 200Mbps (Full Duplex) ◆ 1000 Base-T Gigabit Ethernet: 2000Mbps (Full Duplex)
Filtering Address Table	8K entries per switch
MAC Address Learning	Automatic update
RAM Buffer	512K bytes per switch
Virtual LAN	<ul style="list-style-type: none"> ◆ Port-based VLAN ◆ Up to 24 VLAN groups
Priority Queuing	2 levels
Physical and Environment	
Environmental Requirements	Operating temperature : 0°C to 40°C Storage temperature : -10°C to 70°C Operating humidity : 10% to 90% RH Storage humidity : 5% to 90% RH RH = Relative Humidity
Physical Dimension	440mm x 210mm x 44mm (W x H x D)
Power Consumption	Maximum of 35 Watts
AC Inputs	100-240V AC, 50/60

8: TCP/IP Configuration

Once the hardware has been set up, you need to assign an IP address to your PC so that it will be in the same subnet as Compex GSC2024WM. By default, Compex GSC2024WM's IP address is 192.168.100.128; and its subnet mask is 255.255.255.0. You need to configure your PC's IP address to 192.168.100.xxx; and its subnet mask is 255.255.255.0, where xxx can be any number from 1 to 254 excluding 128. Simply follow the procedures stated below to configure the TCP/IP settings of your PC.

For Windows 95/98/98SE/ME/NT

Please note the following instructions are based on Windows 98.

Step 1

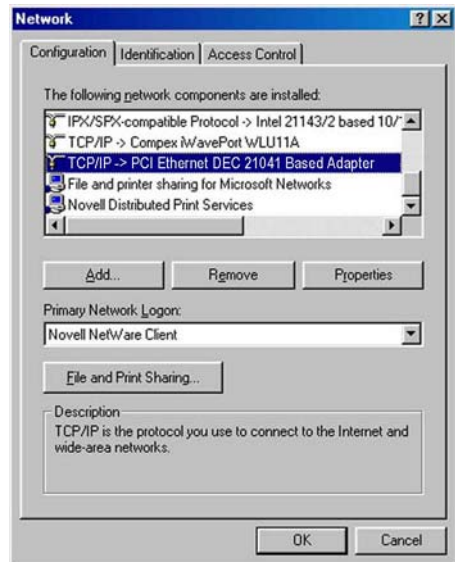
From your desktop, choose **Network Neighborhood** icon and select **Properties**.

Step 2

Choose the network adapter that you are using; right click and select **Properties**.

Step 3

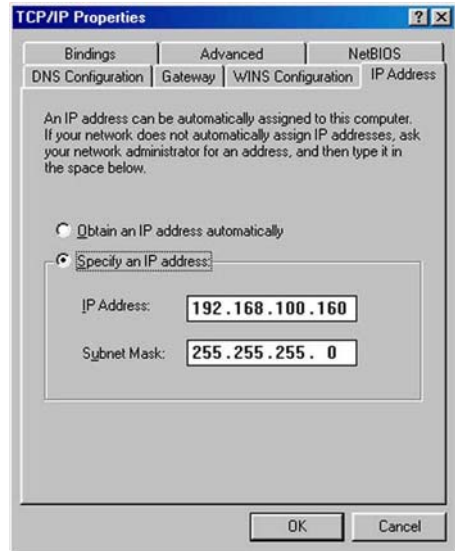
Highlight the **TCP/IP** and click on **Properties** button.



Step 4

Select the radio button for **Specify an IP address**.

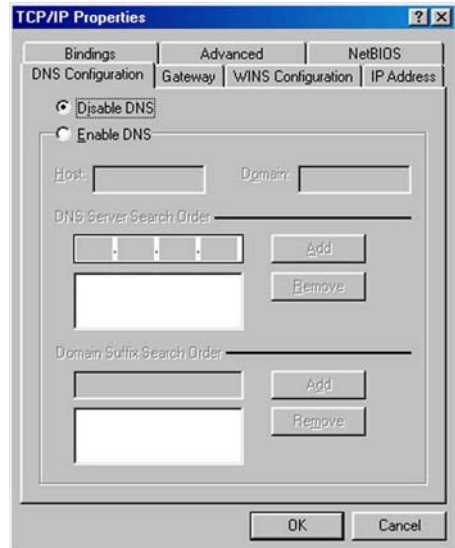
Enter the IP Address and Subnet Mask as 192.168.100.xxx and 255.255.255.0, where xxx can be any number from 1 to 254, except for 128. In this example, we are using 192.168.100.160 as the static IP Address.



Step 5

From the **DNS Configuration** Tab, select **Disable DNS**.

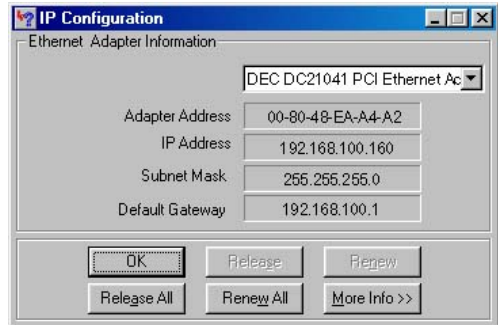
Press **OK** to close all windows and allow your computer to reboot.



Step 6

In order to check if the IP address has been assigned correctly to your PC, simply go to the **Start** menu, select **Run**, and enter the command *winipcfg*.

Select your respective Ethernet Adapter from the drop down list and click **OK**.



Now, your PC is now ready to configure CompeX GSC2024WM. Please refer to the user's manual in the Product CD for more details on configuring CompeX GSC2024WM.

For Windows XP/2000

Step 1

Go to your desktop, click on **My Network Places** icon and select **Properties**.

Step 2

Go to your network adapter icon, right click and select to **Properties**.



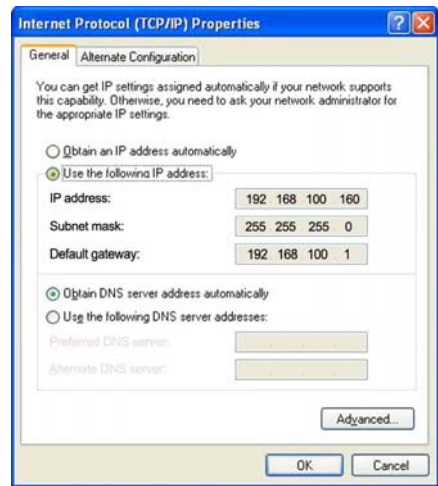
Step 3

Highlight **Internet Protocol (TCP/IP)** and click on **Properties** button.



Step 4

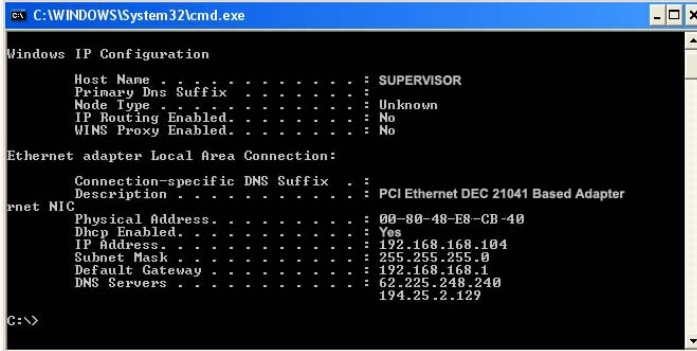
Select the radio button for **Use the following IP address**. Enter the IP Address and Subnet Mask as 192.168.100.xxx and 255.255.255.0, where xxx can be any number from 1 to 254, except for 128. In this example, we are using 192.168.100.160 as the static IP Address.

**Step 5**

Click on **OK** to close all windows.

Step 6

Next, in order to check if the IP address has been correctly assigned to your PC, go to **Start** menu, **Accessories**, select **Command Prompt** and type the command *ipconfig/all*.



```
ex C:\WINDOWS\System32\cmd.exe
Windows IP Configuration
Host Name . . . . . : SUPERVISOR
Primary Dns Suffix . . . . . :
Node Type . . . . . : Unknown
IP Routing Enabled. . . . . : No
WINS Proxy Enabled. . . . . : No

Ethernet adapter Local Area Connection:
Connection-specific DNS Suffix . . :
Description . . . . . : PCI Ethernet DEC 21041 Based Adapter
Physical Address. . . . . : 00-80-48-E8-CB-40
Dhcp Enabled. . . . . : Yes
IP Address. . . . . : 192.168.168.104
Subnet Mask . . . . . : 255.255.255.0
Default Gateway . . . . . : 192.168.168.1
DNS Servers . . . . . : 62.225.248.240
                          194.25.2.129

C:\>
```

Your PC is now ready to configure Compex GSC2024WM. Please refer to the user's manual in the Product CD for more details on configuring Compex GSC2024WM.

Further Information References

If you are using a different Windows operating systems or broadband Internet account, please refer to the User's Manual in the accompanying Product CD.

This document may become superseded, in which case you may find its latest version at: <http://www.compex.com.sg/prodspec.asp?f=Manual&s=1>

Disclaimer: **Compex, Inc.** provides this guide without warranty of any kind, either expressed or implied, including but not limited to the implied warranties of merchantability and fitness for a particular purpose. **Compex, Inc.** may make improvements and/or changes to the product and/or specifications of the product described in this guide, without prior notice. **Compex, Inc.** will not be liable for any technical inaccuracies or typographical errors found in this guide. Changes are periodically made to the information contained herein and will be incorporated into later versions of the guide. The information contained is subject to change without prior notice.

Trademark Information: **Compex**[®], **ReadyLINK**[®] and **MicroHub**[®] are registered trademarks of **Compex, Inc.** **Microsoft Windows** and the **Windows logo** are the trademarks of **Microsoft Corp.** **NetWare** is the registered trademark of **Novell Inc.** All other brand and product names are trademarks or registered trademarks of their respective owners.

Notice: Copyright © 2005 by **Compex, Inc.** All rights reserved. Reproduction, adaptation, or translation without prior permission of **Compex, Inc.** is prohibited, except as allowed under the copyright laws.

Manual Revision by Daniel

Manual Number: M-0490-V1.1C Version 1.1, October 2006

FCC NOTICE: This device has been tested and found to comply with the limits for a **Class A** digital device, pursuant to **Part 15 of the FCC Rules**. These limits are designed to provide reasonable protection against harmful interference in a residential installation. This device generates, uses and can radiate radio frequency energy and, if not installed and used in accordance with the instructions, may cause harmful interference to radio communications. However, there is no guarantee that interference will not occur in a particular installation. If this device does cause harmful interference to radio or television reception, the user is encouraged to try to correct the interference by one or more of the following measures:

- ♦ Reorient or relocate the receiving antenna.
- ♦ Increase the separation between the computer and receiver.
- ♦ Connect the computer into an outlet on a circuit different from that to which the receiver is connected.
- ♦ Consult the dealer or an experienced radio/TV technician for help.

Caution: Any changes or modifications not expressly approved by the grantee of this device could void the user's authority to operate the equipment.

FCC Compliance Statement: This device complies with Part 15 of the FCC Rules. Operation is subject to the following two conditions:

- (1) This device may not cause harmful interference, and
- (2) This device must accept any interference received, including interference that may cause undesired operation.

ICES 003 Statement

This Class A digital apparatus complies with Canadian ICES-003

DECLARATION OF CONFORMITY: *Compex, Inc. declares that the product:*

Product Name: Compex 24-Port 10/100/1000Mbps Web Managed Gigabit Ethernet Switch

Model No.: GSC2024WM 1a *conforms to the following Product Standards:*

Radiated Emission Standards: EN55022A, FCC Part 15 Class A

Conducted Emission Standards: EN60555Pt2 conducted emission; EN55022A conducted emission, LVD 60950 standard, FCC Part 15 Class A

Immunity Standards: IEC 801-2; IEC 801-3; IEC 801-4

Low Voltage Directive: EN 60 950:1992+A1; 1993+A2; 1993+A3; 1995+A4; 1996+A11; 1997.

Therefore, this product is in conformity with the following regional standards: FCC Class A — following the provisions of FCC Part 15 directive; CE Mark — following the provisions of the EC directive.

Manufacturer's Name: Compex, Inc.

Address: 840 Columbia Street, Suite B,
Brea, CA92821, USA

European Contact & Technical Support

ReadyLINK Networktechnology GmbH,
Albert Einstein Straße 34/M21,
63322 Rödermark, Germany

Fax: ++49 (60) 749-0668

WARRANTY REGISTRATION CARDRegister via the Internet at <http://www.cpx.com>
or <http://www.compex.com.sg>

[M-0088-V2.4C]



To activate the warranty, please complete this card and return to Compex within ninety (90) days from the date of purchase.

Please e-mail this warranty card to support@compex.com.sg.

Product:	Purchase Date:	Model:	Serial No:
Name:		E-mail:	
Company:			
Address:			
Postal/Zip Code:		Country:	
Phone: ()			

Note:

For purchases within U.S.A and Canada, please fax to Compex, Inc. at (714) 482 0332

For purchases outside U.S.A and Canada, please fax to Compex Systems Pte Ltd at (65) 6280-9947

Manual Number:
M-0490-V1.1C
Version 1.1
October 2006

FCCE
